

Residential Drop-Off Center at Cinder Lake Landfill

Pine Engineering Inc.

Outline

- Project Understanding
- Scope of Services
- Project Schedule
- Cost of Engineering Services

The background of the slide is split into two horizontal sections. The top section is teal with a fine, repeating pattern of diagonal lines. The bottom section is solid black. A white zigzag line separates the two sections, starting from the left edge, dipping down, then going up, then down again, and finally up to the right edge.

Project Understanding

Introduction & Background

- Cinder Lake Landfill serves the citizens of the City of Flagstaff and the Coconino County
- 135,000 people served yearly (residential and industrial)
- Service Life ends 2054 (Liability 2084)

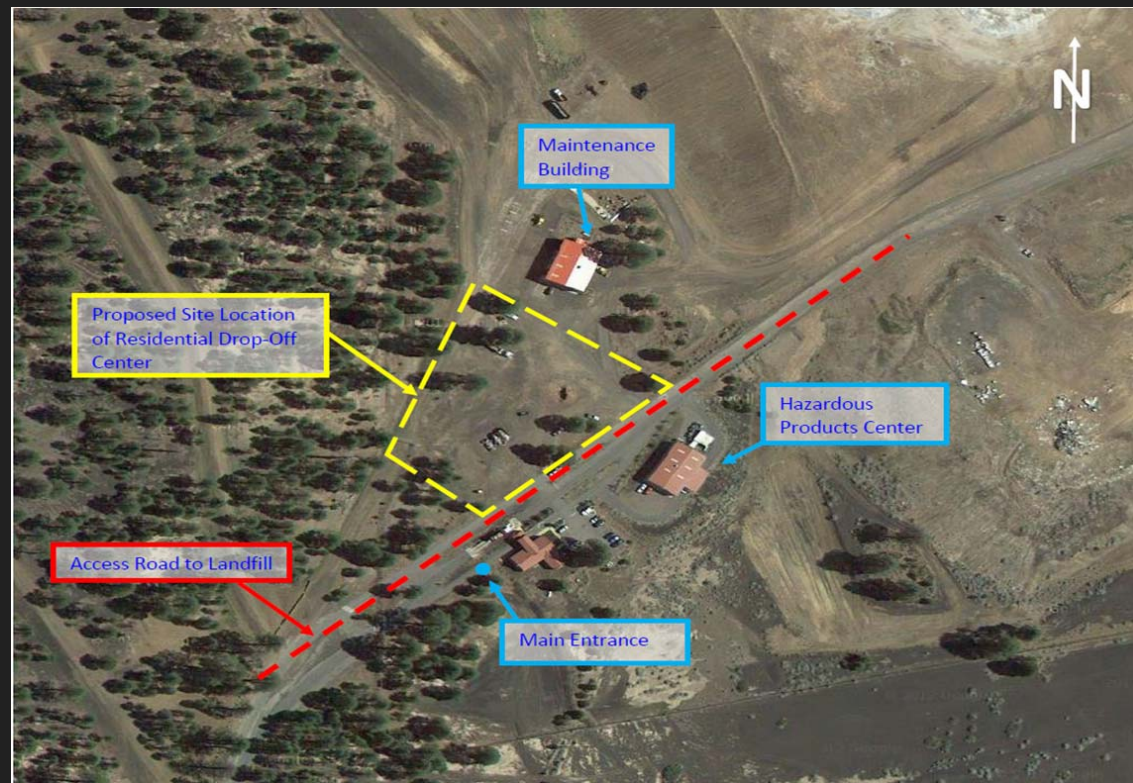
Client, Technical Advisor, Stakeholders

- Client: Cinder Lake Landfill, Matt Morales P.E., Project Manager
- Technical Advisor: David Monihan Jr. P.E., R.L.S.
- Stakeholders: City of Flagstaff, Coconino County

Project Description

- Design of a Residential Drop-Off Center (RDC) to increase the safety of the residential clients.
- Existing Conditions:
 - Hydrology
 - Existing Vegetation
 - Public Entrance

Existing Conditions



Project Description: Hydrology



Project Description: Residential Drop-Off Center(RDC)

- Needed to keep residents out of main drop-off area where injuries could occur.
- 2.50 acres of land for RDC
- Drop-Off bins include
 - MSW, and industrial waste
 - Recycling (Paper, Plastic, etc.)
 - Wood waste
 - Green waste
 - White goods
- Drop-Off does not include
 - Chemical Waste
 - Appliances
 - Paper Waste

Exclusions

- Environmental Studies
- Utilities connections
- Geotechnical Investigations
- Archeological Studies
- Landscaping Design
- Flagstaff City Submittals
- ADEQ AZPDES Notice of Intent form

Scope of Services

- Topographic Survey
- Retention Wall
- Drainage/Grading Plan
- Stormwater Pollution Prevention Plan
- On-site Construction Plan
- Traffic Report
- Design Layout
- Engineer's Opinion of Probable Cost

Impacts

- Social
- Economical
- Environmental

Schedule

- Notice to Proceed: January 13, 2014 (1 day)
- Surveying (Boundary Establishments): January 14-15, 2014 (2 days)
- Traffic Analysis: January 16-28, 2014 (9 days)
- Hydraulic Analysis: January 29 to February 10, 2014 (9 days)
- Retention Wall: February 11-13, 2014 (3 days)
- Design: February 14 to April 4, 2014 (36 days)
- 90% Report: April 21, 2014
- Final Report: May 1, 2014

Cost of Engineering Services

Personnel	Person	Hours	Rate, \$/hr	Cost, \$
	SENG	200	125	25000
	ENG	680	110	74800
	LAB	10	44	440
	INT	272	25	6800
	AA	20	38	760
	Total personnel			107800
Travel	Local meetings			
	5 mtgs*30mi/mtg	\$0.40/mi		60
Overhead				38952
TOTAL				146812

The image features a teal-colored top section with a fine, repeating pattern of diagonal lines. Below this is a solid black section. The word "Questions?" is centered in the black section in a white, sans-serif font.

Questions?